

# LISKOW&LEWIS

A Professional Law Corporation

822 Harding Street  
Post Office Box 52008  
Lafayette, LA 70505  
(337) 232-7424 Main  
(337) 267-2399 Fax

www.Liskow.com

One Shell Square  
701 Poydras Street, Suite 5000  
New Orleans, LA 70139  
(504) 581-7979 Main  
(504) 556-4108 Fax

First City Tower  
1001 Fannin Street, Suite 1800  
Houston, TX 77002  
(713) 651-2900 Main  
(713) 651-2908 Fax

July 14, 2010

Richard W. Revels, Jr.  
rwrevels@liskow.com

Honorable James H. Welsh  
Commissioner of Conservation  
Office of Conservation  
P. O. Box 94275  
Baton Rouge, LA 70804-4275

Re: Jurassic Zone, Reservoir A  
Grogan Field  
Sabine Parish, Louisiana

Dear Commissioner Welsh:

Application is hereby made on behalf of **SWEPI LP**, for the calling of a public hearing, after ten (10) days legal notice, to consider evidence relative to the issuance of an order pertaining to the following matters:

1. To permit the applicant to drill, designate and utilize its Louisiana Minerals 6 No 1 Well as unit well for the JUR RA SUK, at the location shown on the plat attached hereto, in exception to the spacing provisions of Office of Conservation Order No. 955-G, effective January 23, 2008, or within a tolerance radius of 100 feet thereof, to account for any slight variation in the actual "as drilled" location, with the understanding that no perforations shall be closer than 330 feet from the nearest unit line or 660 feet from perforations in the nearest offset Jurassic or Haynesville Zone well
2. To find that the proposed unit well at the location shown is necessary to efficiently and economically drain a portion of the reservoir covered by the unit in which it is situated and that use of such well will not adversely affect offset owners.
3. To designate SWEPI LP as unit operator of the JUR RA SUK.
4. Except to the extent contrary herewith, to continue in full force and effect the provisions of Office of Conservation Order No. 955-G, effective January 23, 2008, the units created thereby, and applicable Statewide Orders.
5. To consider such other matters as may be pertinent.

The Jurassic Zone, Reservoir A, in Grogan Field, Sabine Parish, Louisiana, was defined in Office of Conservation Order No. 955-G, effective January 23, 2008



LISKOW &amp; LEWIS

Page 2

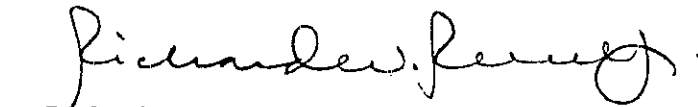
July 14, 2010

Attached hereto and made a part hereof is a plat outlining the applicant's proposal along with a list of the names and addresses of the Interested Owners, Represented Parties and Interested Parties to whom a copy of this application is being sent. Pursuant to the Revised Rules of Procedure, the list of parties is being furnished ONLY to the Commissioner of Conservation and to the District Manager of the Shreveport District of the Office of Conservation. However, the list of parties will be provided to any party requesting a copy of it. A reasonable effort was made to ascertain the names and addresses of all Interested Owners, Interested Parties and Represented Parties

Finally, enclosed is our check on behalf of the applicant in the amount of \$755.00 made payable to the Office of Conservation and representing the required hearing application fee.

Sincerely,

LISKOW & LEWIS



Richard W Revels, Jr.

RWRjr:dbf  
Enclosures

272070\_1  
78475 0232

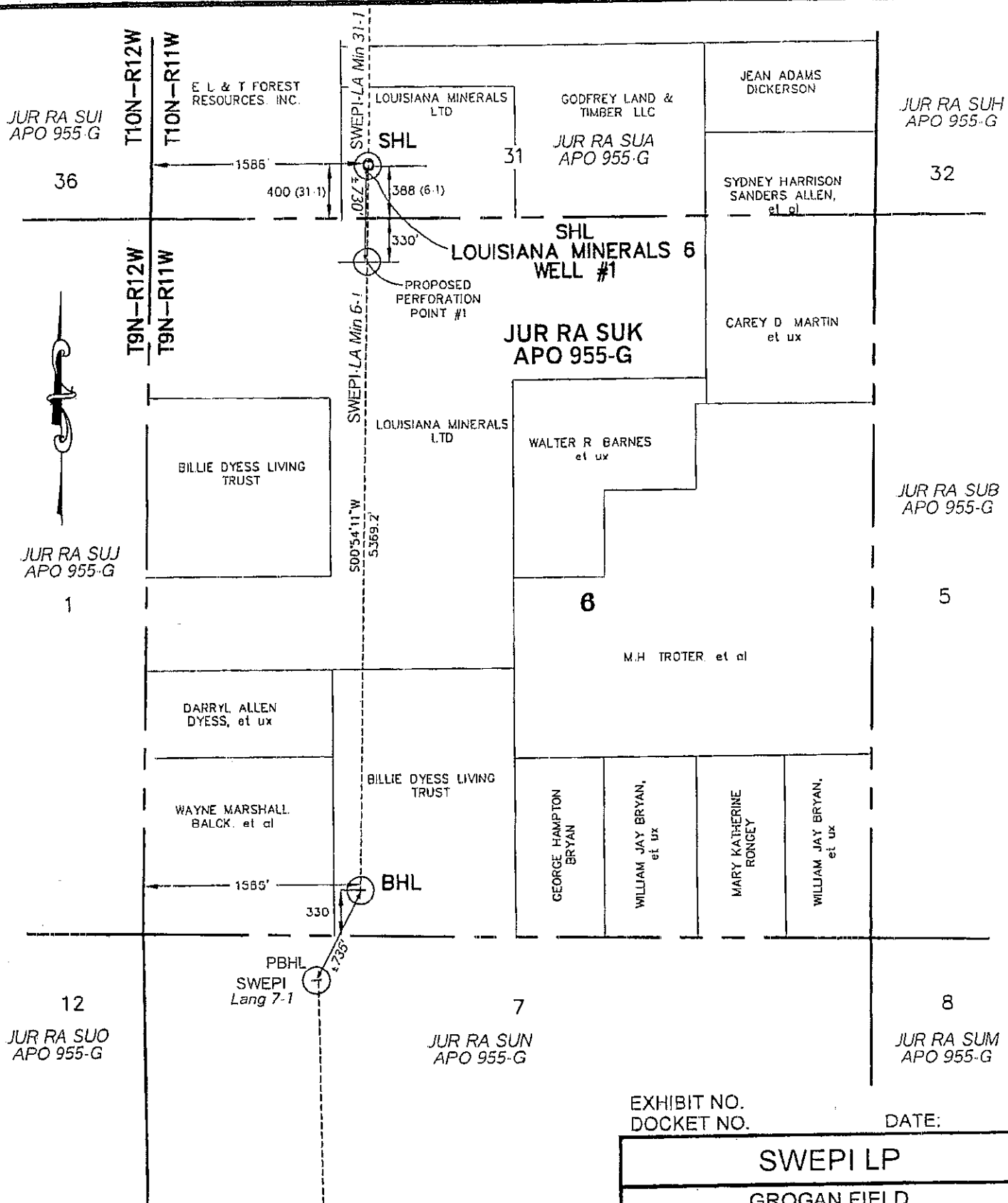
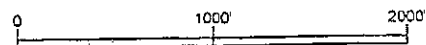


EXHIBIT NO.  
DOCKET NO.

DATE:

**SWEPI LP**

**GROGAN FIELD**  
SABINE PARISH, LOUISIANA  
PROPOSED UNIT WELL AT  
AN EXCEPTIONAL LOCATION  
**JUR RA SUK**



**W. H. ROBBINS & ASSOCIATES LLC**  
CONSULTING GEOLOGISTS  
Lafayette, Louisiana (337) 232-5004

Note: Only Haynesville wells shown.