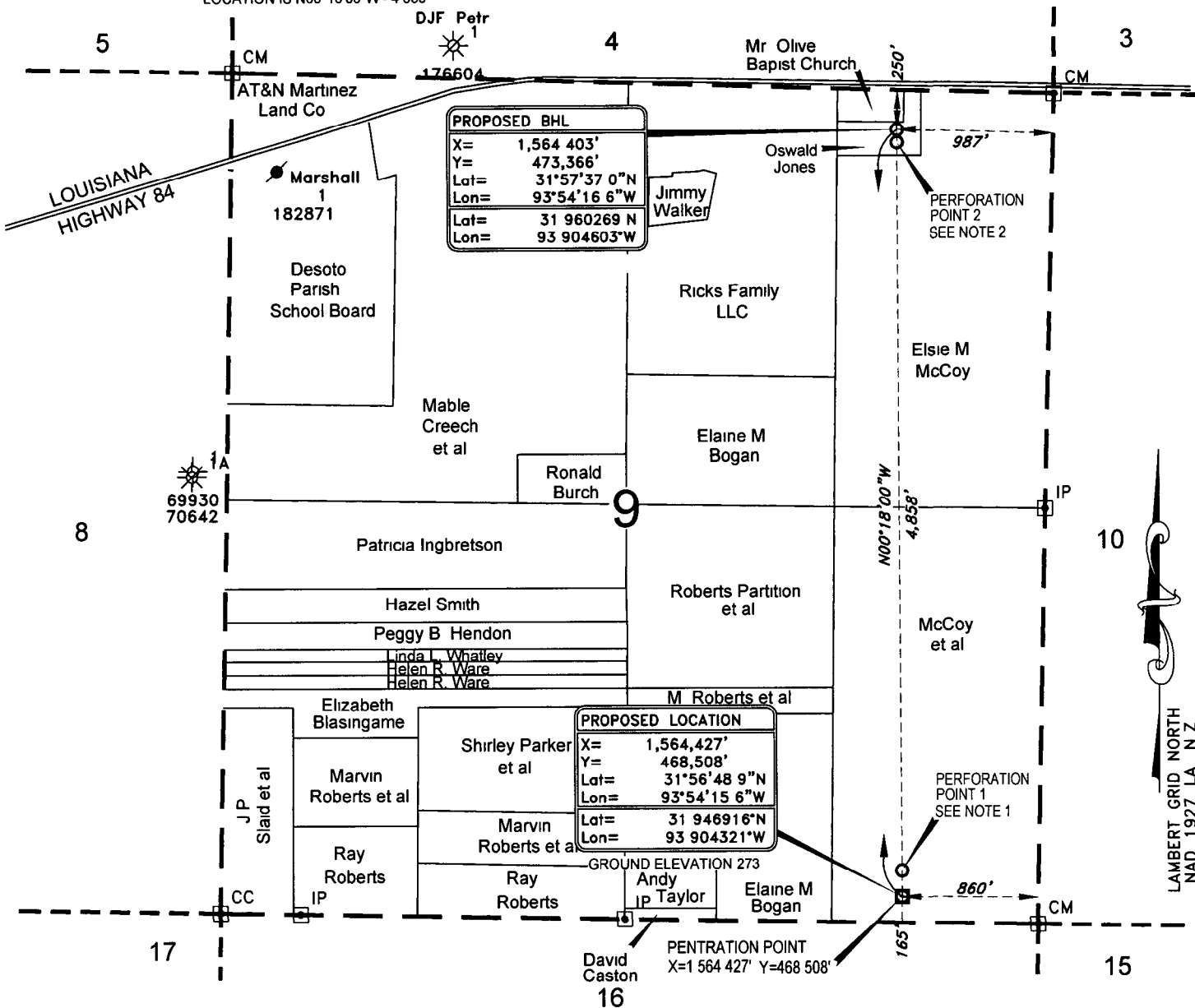


NOTE BEARING AND DISTANCE FROM
PENETRATION POINT TO BOTTOM HOLE
LOCATION IS N00°18'00" W - 4 858'

T11N-R15W



No residential or commercial structures, not owned by applicant, his lessor, or other predecessor in interest were situated within a 500' radius of this location on November 24, 2008

NOTE 1 PERFORATION POINT TO BE NO CLOSER THAN 330' FROM THE SOUTH LINE OF SECTION 9

NOTE 2 PERFORATION POINT TO BE NO CLOSER THAN 330' FROM THE NORTH LINE OF SECTION 9

I, Rex R. Jones hereby certify that the proposed surface location of Chesapeake Operating, Inc. MCCOY et al 9 H No 1 was staked as follows

PROPOSED SURFACE LOCATION being 165' from the South line and 860' from the East line of Section 9 T11N-R15W, Desoto Parish Louisiana
PROPOSED BOTTOM HOLE LOCATION being 250' from the North line and 987' from the East line of Section 9, T11N-R15W Desoto Parish, Louisiana

PERFORATION POINT 1	X=1,564,426' Y=468 673'
PERFORATION POINT 2	X=1 564,402' Y=473 286'

CHESAPEAKE OPERATING, INC
MCCOY ET AL 9 H NO. 1
SECTION 9, T11N-R15W
LOGANSPOUT FIELD
DESOTO PARISH, LOUISIANA

REX R JONES
PROFESSIONAL LAND SURVEYOR
LOUISIANA REGISTRATION NO. 4873

C&C Technologies
SURVEY SERVICES

REX R JONES
REG NO 4873
REGISTERED

730 E. KALISTE SALOOM ROAD LAFAYETTE, LA (337) 267-0660

DWG BY RAM CHK BY R

FILENAME L11N15W108-4351D08-4351 DWG

0' SCALE IN FEET 1000'

DATE 12/17/2008