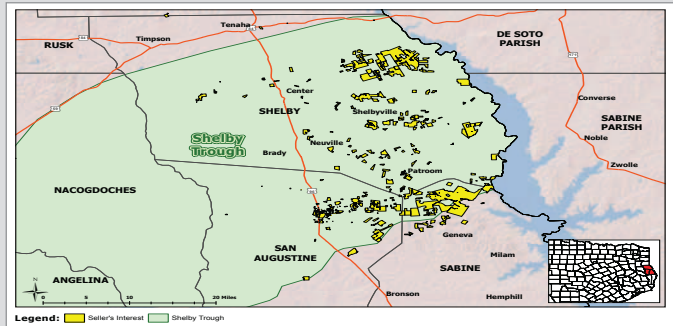


## EAST TEXAS PROSPECT

47,297-Gross Acres. (21,682-Net)  
SABINE, SAN AUGUSTINE & SHELBY CO.  
MIDDLE BOSSIER & HAYNESVILLE  
James Lime, Travis Peak & Cotton Valley  
Proposed Depths: 5,600 - 13,200 Ft. (TVD)  
>50% OPERATED WI: 75% NRI (Avg)  
Potential IP: 8.0 to 17.0 MMCFD  
Estimated Reserves: 1.4 TCF (Unrisked)  
CA Required for Detailed Information  
DV 6047L

## Chesapeake Energy: Shelby Trough



## Deal Summary

Chesapeake Energy has retained PLS to market their ~21,800 Net Acres, which the majority lies in the Shelby Trough. Primary targets are the middle Bossier and Haynesville shales. These stacked shales are of reservoir quality with thickness ranging from 140' to 200' and have an average porosity of 8%. From well control, true vertical depths range from 10,800' in the north to 13,200' in the south. There are multiple horizontal Haynesville and Bossier wells in and around the acreage with IP's ranging between 8 to 17 MMCFD. This includes the **CHK Wright G.U. SAG #1H** with an IP of 16.7 MMCFD and the **CHK Frazier Federal #1H** with an IP of 15.4 MMCFD. This region has stacked potential in the Haynesville and Bossier shale formations as well as uphole potential with 1.4 TCF in unrisked reserves.

Additional targets include James Lime, Travis Peak and Cotton Valley reservoirs which have been established as strong secondary targets around the area. True vertical depth to the James Lime ranges from 5,600' to 7,700'.

**Chesapeake Energy: ~ 21,800 Net Acres**  
Production Filter > 50 BOED

**Sabine, San Augustine & Shelby Cos., TX**  
Formations: Bossier & Haynesville

