

Called 149.6 Ac
Teddy Gene Eddins, Sr
568/247

TOLLES
No. 1

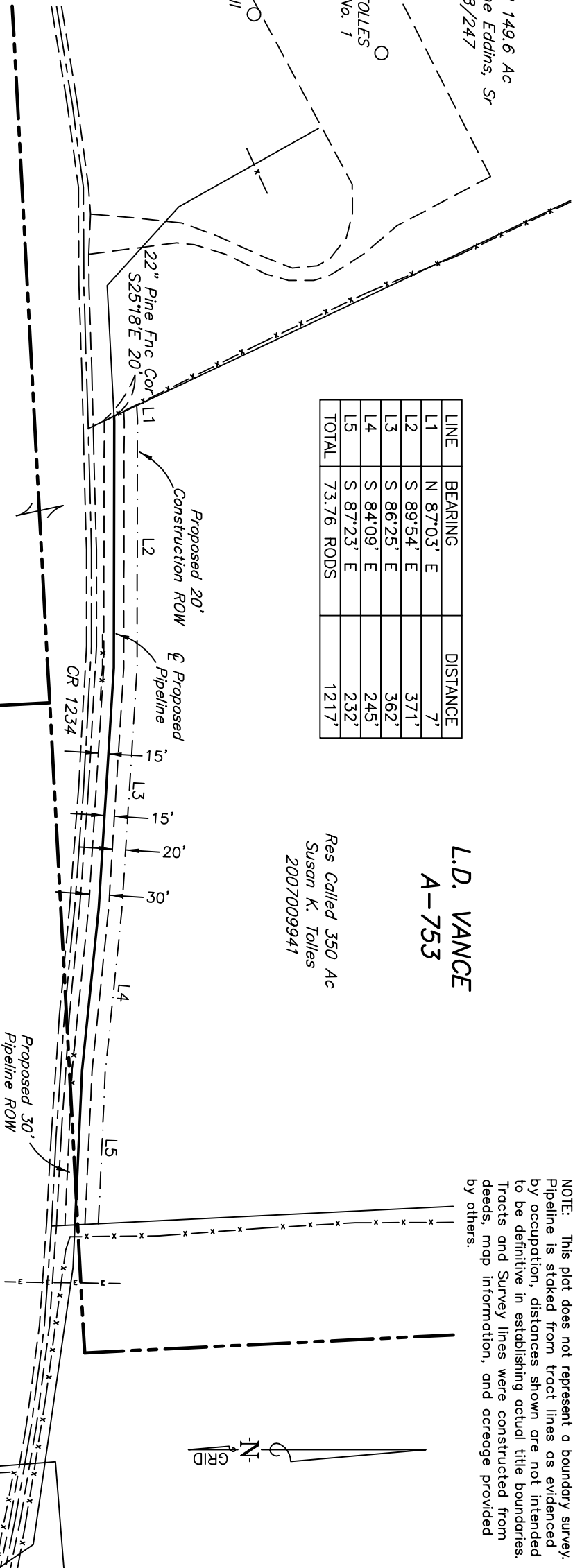
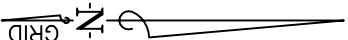
Water Well

LINE	BEARING	DISTANCE
L1	N 87°03' E	7'
L2	S 89°54' E	371'
L3	S 86°25' E	362'
L4	S 84°09' E	245'
L5	S 87°23' E	232'
TOTAL		1217'

L.D. VANCE
A-753

Res Called 350 Ac
Susan K. Tolles
2007009941

NOTE: This plat does not represent a boundary survey.
Pipeline is staked from tract lines as evidenced
by occupation, distances shown are not intended
to be definitive in establishing actual title boundaries.
Tracts and Survey lines were constructed from
deeds, map information, and acreage provided
by others.



FOR THE EXCLUSIVE USE OF
EOG RESOURCES, INC.

LEWIS ODOM
A-539

Called 226 Ac
Timberstar Nacogdoches I, L.P.
1065/171

I.F. PACE
A-554

Called 90.75 Ac

PIPELINE PLAT
EOG RESOURCES, INC.

TOLLES NO. 1

L.D. VANCE SURVEY A-753
I.F. PACE SURVEY A-554
SHELBY COUNTY, TEXAS



BILL H. BURTON
Registered Professional Land Surveyor

PRELIMINARY
This Document Shall Not be
Recorded For Any Purpose

BILL H. BURTON
Registered Professional Land Surveyor

From the Office of ELS Surveying & Mapping, Inc. / Harry L. Johnson & Associates
2004 W Grande Blvd Tyler Texas 75703 903-581-7759

